

Manual Wafer Biscuit Machine

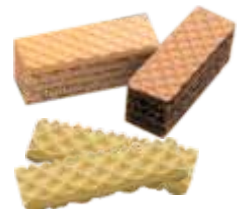
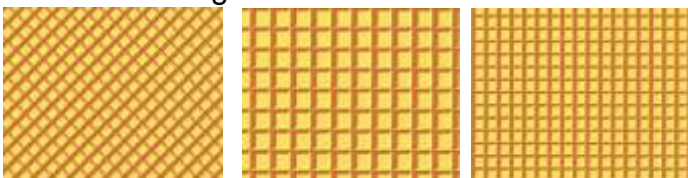
'WT' Series



Special Design



Standard Design



Your Profit's Producer

'WT' Manual Creaming Wafer Plants

WT Series Cream wafer plants are used for the manual operated production of cream wafer biscuits, for trial production or lab purpose.

They are characterized by simple mechanism that are sturdy and flexible

These machines are low cost and economical in operation, depending on the out put required, they can be supplied with 6,9 or 12 Wafer baking tongs.

Baking Plates

The plates are made of special alloy. The selection of alloy and the casting procedure ensures dimensional stability, a homogeneous and dense surface, thermal stability, good heat accumulation characteristics and excellent thermal conductivity. Special finishing is done to ensure trouble free release of wafer sheets. The wafer thickness is quickly and easily adjusted by applying spacing shims.

Batter Preparation

Wheat flour, maize starch, vegetable fat, preservatives, colors etc. Is churned into a paste in the batter mixer.

Machine Operation

The batter is fed to pre-heated wafer tongs by a special dosing device. Baking takes 1-3* minutes. The baked sheets are cooled. Subsequent operations are creaming, sandwiching & cutting. The wafers are then packed.

Workers required
Operational area required
Capacity & Output details(6WT)

One unskilled workers are required to complete the baking cycle.
The total operational area required is about 750 Sq.Ft.
Production from 100 to 125 kgs* can be made in 8hrs (with Wt6).

Technical Details :

Out put of wafer sheets/hr	30*
Electric Heating : Connected load in KW	2.5
Current Consumption in KW/Hr	2.0
Cream filled wafers/Hour**(Kgs app)	4
Dimensions (approx.in mm)	
6 stations are pkd. As 3 stations X 2 cases	1 Tong X 1
Length	750mm
Width	440mm
Height	300mm
Net weight	80
Weight incl.sea worthy packing	150
Shipping space in M3	1.0


*Modifications Reserved

We are constantly guided by our principle of offering our customers better and better machines; to give increased efficiency and higher levels of automation. The technical data and illustrations are subject to change without notice

R&D Engineers

A-41, IDA Kukatpally, Phase II, Road No.4, Via I.E. Gandhi Nagar, Hyderabad-500 037. India.

Phone: 23079121, 23077985, Fax: 0091-40-23078668

E-mail: info@rndwafers.com [Web: www.rndwafers.com](http://www.rndwafers.com) 

Local Contact :